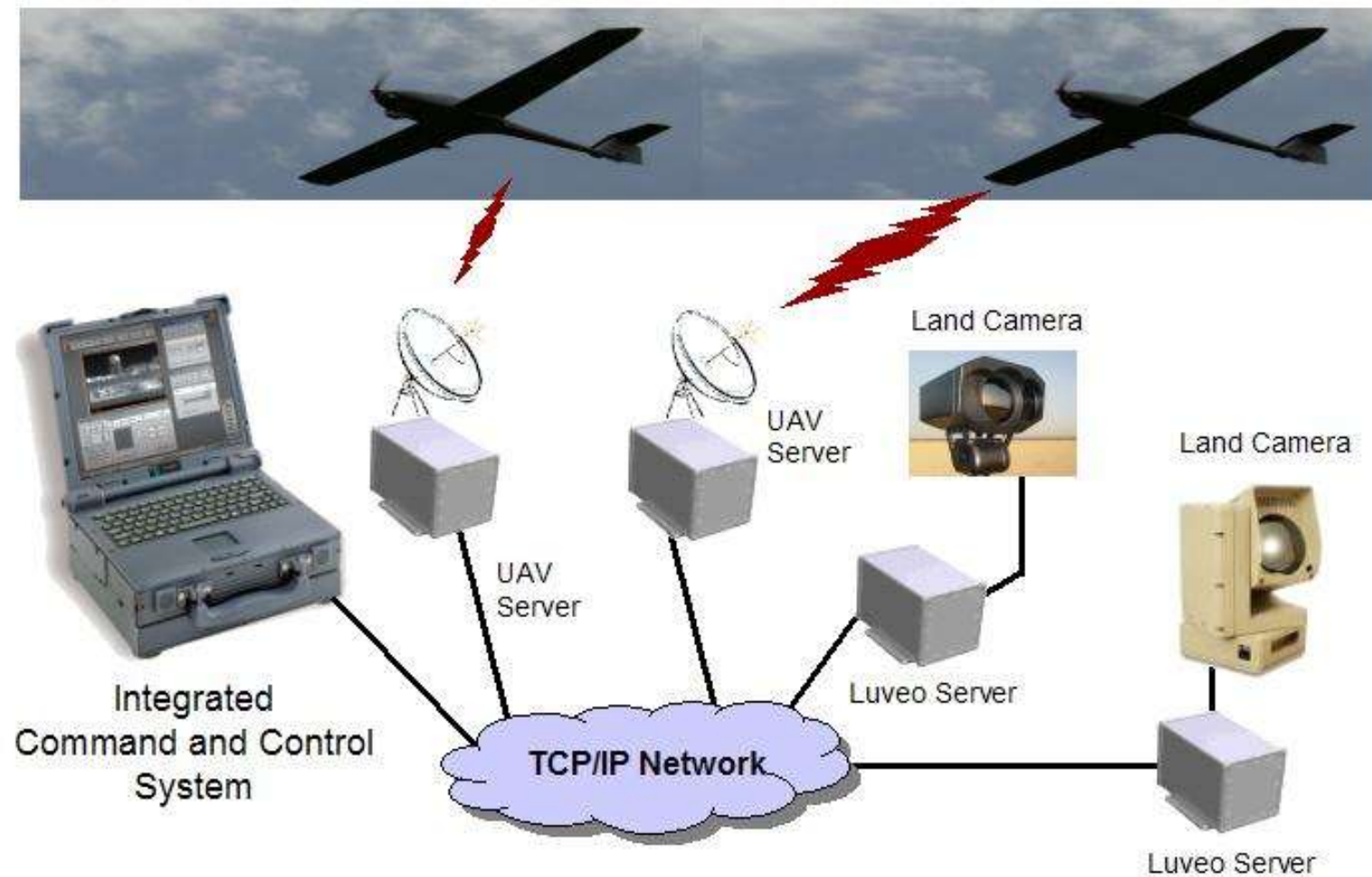


# Sesión IV: Robótica y Empresa



Andrés Prieto-Moreno Torres  
Ifara Tecnologías  
Profesor asociado UAM





Selectable zoom in areas of interest



Simple user interface



Super wide 180° x 43° view





Servidores de Control y Vídeo:

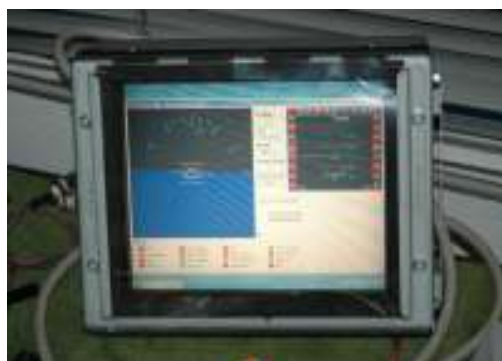
- Codificador MPEG-1/2 o MPEG-4
- 2 x RS-232, 2xRS-422
- Interfaz Ethernet 100BaseT
- Sistema Operativo Linux embebido
- Disco Duro de estado sólido (DiskOnChip)
- Interfaz Web de Configuración
- Equipo de intemperie, IP-66
- Op. Temp.: -20 a 70°C



Plataforma de vigilancia:

- Movimiento Azimut y Elevación
- Cámara IR
- Cámara visible
- Equipo de intemperie, IP-66
- Op. Temp.: -20 a 70°C





UAV *Navigation*



**UAV GCS Client - Ground Control Station**

File Edit View Communications Mode Flight Plan Alarms Map Recording Video Camera Help

**Flight Plan Edition**

ID	Latitude	Longitude	Altitude	IAS	Active
1	06° 29' 40.19" S	02° 22' 36.81" E	0	0	Yes
2	07° 00' 55.90" S	04° 16' 04.94" E	0	0	Yes
3	04° 36' 12.07" S	04° 10' 17.58" E	0	0	Yes
4	04° 18' 50.00" S	06° 44' 17.19" E	0	0	Yes
5	02° 19' 34.52" S	04° 45' 01.71" E	0	0	Yes
6	03° 07' 02.82" S	01° 58' 17.92" E	0	0	Yes
7	00° 00' 00.00" N	00° 00' 00.00" E	0	0	No
8	00° 00' 00.00" N	00° 00' 00.00" E	0	0	No
9	00° 00' 00.00" N	00° 00' 00.00" E	0	0	No
10	00° 00' 00.00" N	00° 00' 00.00" E	0	0	No
11	00° 00' 00.00" N	00° 00' 00.00" E	0	0	No
12	00° 00' 00.00" N	00° 00' 00.00" E	0	0	No

ID: 3 Lat: 4° 36' 12.07" S Alt: 0 Up Edit FP  
Lon: 4° 10' 17.58" E TAS: 0 Down Clear FP

Default: Altitude: 0 TAS: 0

Read Flight Plan from: joaquin OK  
Save Flight Plan to file: OK

Download FP Upload FP

**Operating Mode**

☒ Manual ☐ Directed ☐ Auto

Manual Control

Manual Control from Joystick

Take Off Landing

**Alarms**

- GPS
- Temperature
- IAS
- Altitude
- Bus Voltage 1
- Bus Voltage 2
- CPU Overload
- CPU Reset
- IMU
- Magnetometer
- Pressure Altimeter
- Anemometer
- GPS port no Rx
- Ground Station
- Reserved
- RPM

Mission Time: Bingo Time:

**Camera Control**

Aim Geo

Pan: 0 Tilt: 0

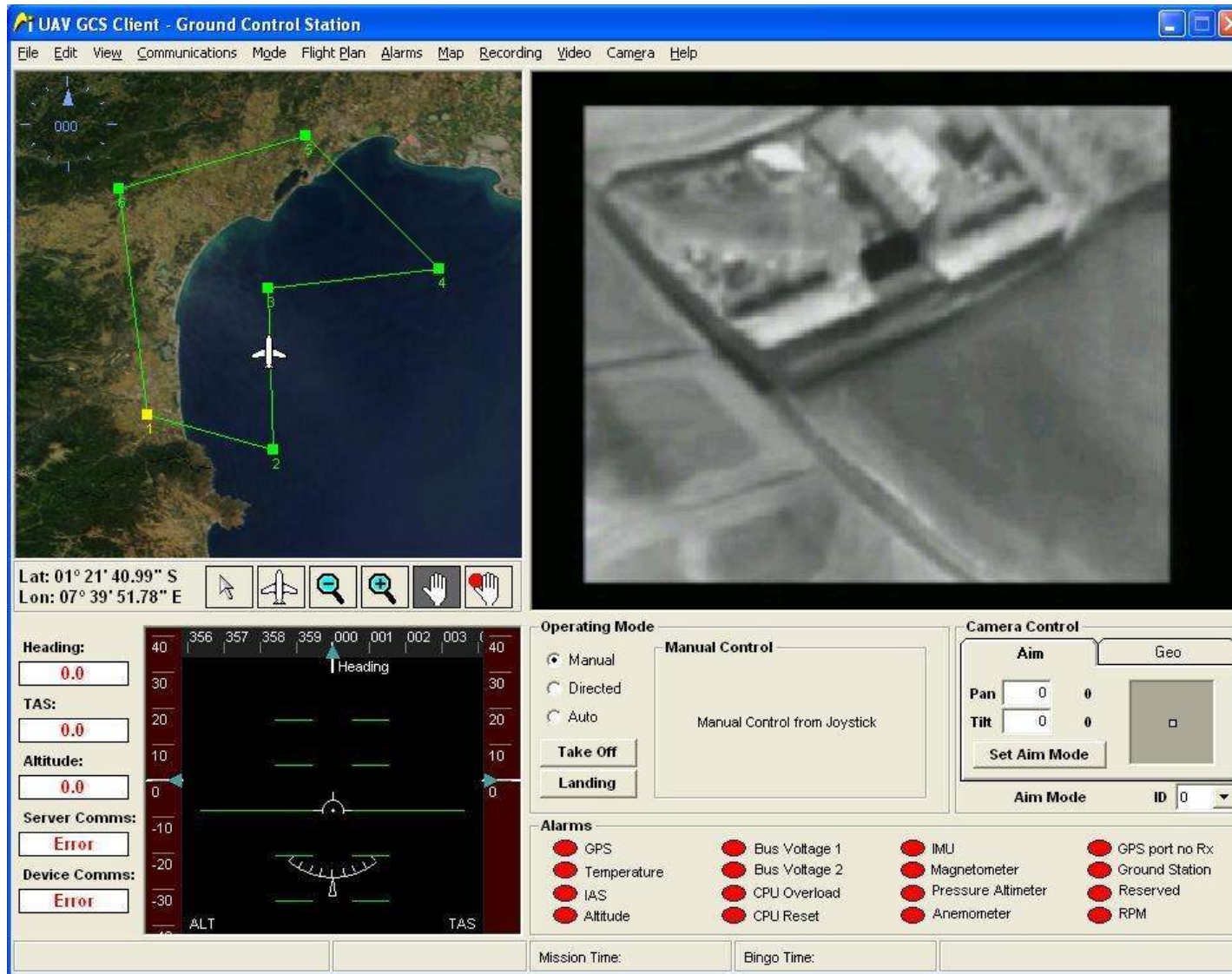
Set Aim Mode

Aim Mode ID: 0

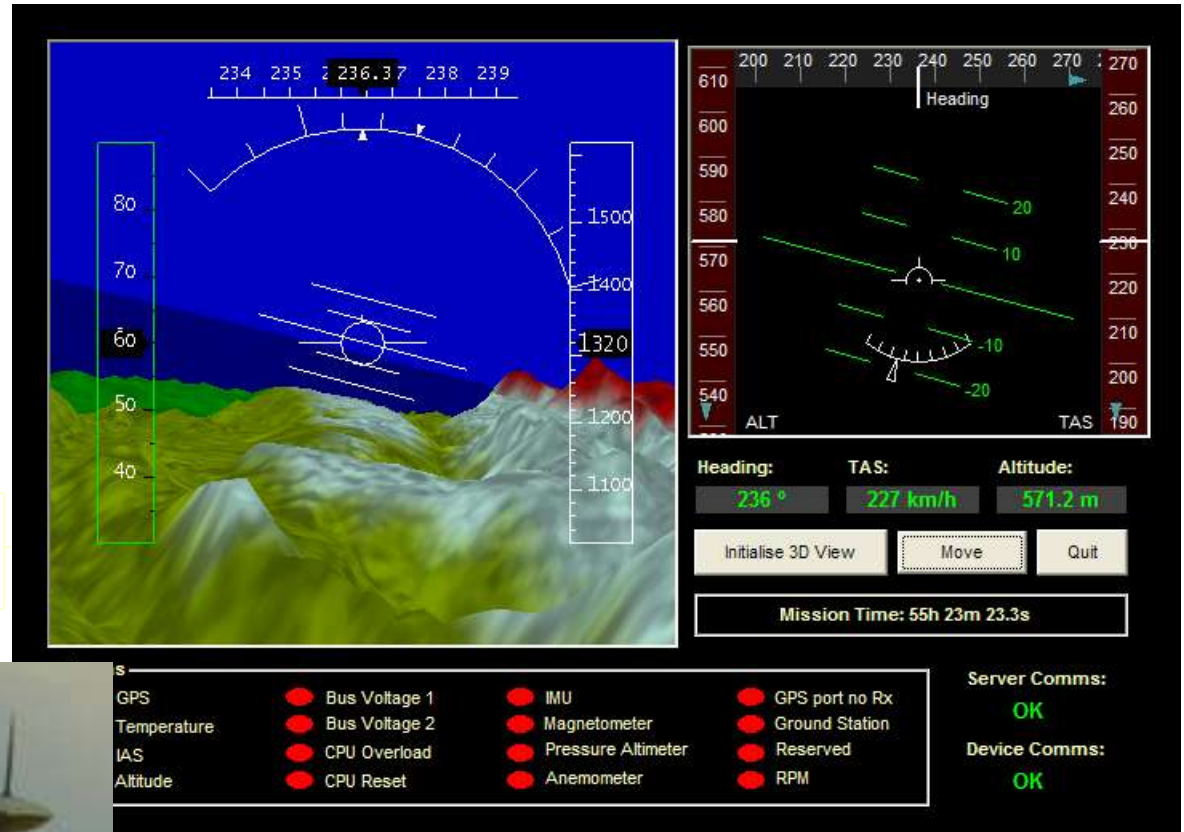
Heading: 0.0 TAS: 0.0 Altitude: 0.0

Server Comms: Error Device Comms: Error

ALT TAS







**UAV** Navigation